

Oxford Cultural Leaders

Residential | Online | Bespoke



The acclaimed international cultural leadership programme delivered by the University of Oxford's Saïd Business School and its Gardens, Libraries and Museums.

www.glam.ox.ac.uk/oxford-cultural-leaders
ocl@glam.ox.ac.uk



in partnership with



2023 Programme

DEVELOPING THE WORLD'S TOP CULTURAL LEADERS

Oxford Cultural Leaders is an acclaimed cultural leadership programme for senior professionals designed and delivered by the University of Oxford's Gardens, Libraries and Museums in partnership with the Saïd Business School. Participants can choose an immersive residential experience in Oxford or a flexible, interactive online experience via Zoom.



RESIDENTIAL PROGRAMME

You will stay in the centre of Oxford, in a historic Oxford college, and experience workshops and talks within the city's landmark buildings and museums. You will benefit from the expertise of Oxford University faculty and access to thought leaders across the cultural sector. You will enjoy excellent networking opportunities and events during the week with peers from around the world.

ONLINE PROGRAMME

You will experience a tailored and highly interactive programme delivered live via Zoom and the flexibility that comes with online delivery. You will interact with peers from around the world and will benefit from the expertise of Oxford University faculty and access to thought leaders from across the cultural sector in a range of workshops and talks. You will receive 1:1 leadership coaching as part of your personalised programme experience.

A LEADING UNIVERSITY AND A WORLD-CLASS BUSINESS SCHOOL

Oxford Cultural Leaders has been designed and delivered since 2015 by Oxford University's Gardens, Libraries & Museums in partnership with the Saïd Business School. The programme brings together expertise from across the cultural and business sectors to encourage participants to explore how cultural organisations can embrace entrepreneurial ways of thinking and behaving and reinvent themselves as not-for-profit hybrid businesses.

NEW BESPOKE PROGRAMMES

Personal programmes and 1:1 leadership coaching customised specifically for your teams and their personal and professional challenges. Contact ocl@glam.ox.ac.uk for more details.





MEET THE FACULTY

Oxford Cultural Leaders Faculty change from year to year and include senior cultural sector leaders and commentators, academic experts in business leadership and industry authorities. Faculty work in a range of institutions including: the Saïd Business School, Oxford University's Gardens, Libraries & Museums, Birmingham Museums Trust, Neon Dance, and Museum of Colour.

Read about current faculty:
www.glam.ox.ac.uk/ocl-faculty

BECOME PART OF AN INTERNATIONAL ALUMNI NETWORK

Since it was established in 2015, Oxford Cultural Leaders has become the programme of choice for international leaders in the arts, museums and heritage sectors. With over 170 alumni in senior roles in the UK, Europe and across the world, OCL has a global reach. OCL alumni are working in a wide range of cultural institutions including:

Arnolfini Galleries, UK • **Arts Centre Melbourne, Australia** • Arts Council England, UK • Bletchley Park Trust, UK • Bristol Old Vic, UK • **British Library, UK** • British Museum, UK • Canada Council for the Arts, Canada • **Cooper Hewitt Design Museum, US** • Danish Arts Foundation, Denmark • **Deutsches Museum, Germany** • Embassy of Denmark, UK • Embassy of Estonia, UK • English National Ballet, UK • **Gaudí Exhibition Center, Spain** • Historic England, UK • Academy of Visual Arts, Hong Kong Baptist University, Hong Kong • Jamaican Military Museum, Jamaica • **The King Abdulaziz Center for World Culture (Ithra), Saudi Arabia** • National Gallery, UK • National Museum of Ireland, Ireland • **National Trust, UK** • Newcastle Art Gallery, Australia • **Parks Canada, Canada** • Sadler's Wells, UK • Science Museum Group, UK • **Smithsonian Institution, US** • Stiftelsen Norsk Folkemuseum, Norway • **Tate, UK** • Te Papa Tongarewa, New Zealand • **University of Pretoria Museums, South Africa** • V&A, UK

Read alumni testimonials:
www.glam.ox.ac.uk/ocl-alumni



OXFORD CULTURAL LEADERS RESIDENTIAL PROGRAMME

DURATION: 6 consecutive days

DELIVERY: On-site (Oxford)

COURSE DATES: 24–29 September 2023

APPLICATION DETAILS:

www.glam.ox.ac.uk/application-fees

Applications to the programme are considered by a panel of faculty members.

CONTACT DETAILS:

ocl@glam.ox.ac.uk

www.glam.ox.ac.uk/oxford-cultural-leaders



COURSE INTRODUCTION

The residential programme is an immersive six day course designed to be challenging and provocative, developmental and supportive. Delegates are based in Oxford, where they can enjoy the benefits of the central Oxford location and access to the expertise of Oxford University staff, OCL Faculty and the acclaimed resources of the University's Gardens, Libraries and Museums.

- Immersive experience in Oxford
- Network with faculty and delegates from around the world
- Interactive workshops, group breakouts, reflection sessions
- Keynote speeches, panel discussions, provocations, lectures
- Maximum group size: 26
- Structured peer-to-peer support
- Social networking events, including visits to cultural sites and college dinners

2023 RESIDENTIAL PROGRAMME FEES

To make the programme as accessible as possible, fees are based on the participants' organisation size and not-for-profit status.

1–15 employees (not for profit)	£3,480
16–70 employees (not for profit)	£4,260
71–150 employees (not for profit)	£4,480
151+ employees (not for profit)	£4,820
1–15 employees (for profit)	£4,220
16–70 employees (for profit)	£4,820
71–150 employees (for profit)	£5,060
151+ employees (for profit)	£5,570

Prices correct at time of publishing: March 2023

Participants (both Home/EU and International) contribute the fee as listed above; the fee is inclusive of tax and includes the cost of all tuition, accommodation, breakfast, lunch and dinner (with the exception of one evening), and one OCL alumni network online session of your choice to be taken during the first year following your programme. Fees are in pounds sterling, other currencies will be converted using a standard exchange rate at the time of payment.

See overleaf for course breakdown.

'My OCL experience was intense, disruptive, challenging, encouraging and inspirational. Every session interrogated my values and ideologies as a cultural leader. It not only bolstered my resilience; it renewed my sense of optimism and purpose.'

Lauretta Morton OAM

Director, Newcastle Art Gallery, Australia

'For anyone considering taking a big step in a new direction, needing expert encouragement and a life-long network, then this is definitely the course for you.'

Sally Shaw MBE

Director, Firstsite, UK

OXFORD CULTURAL LEADERS

RESIDENTIAL PROGRAMME

PROGRAMME CONTENT

Delivered by cultural sector leaders, prominent academics in the field of business and industry authorities from across the UK and Europe, the residential programme runs over six consecutive days covering key leadership questions and challenges such as:

- 'Balancing the challenges of leading in the present and the future'
- 'Creating an organisational culture of risk-taking?'
- 'What do we mean by brave leadership?'
- 'Cultivating my leadership identity'

Read about the programme curriculum:
www.glam.ox.ac.uk/ocl-programme

THE OXFORD EXPERIENCE

Oxford is famous the world over for its University and place in history. Delegates will experience a taste of college life during their stay in University accommodation and will enjoy college dinners and unique Oxford experiences such as a city walking tour and behind-the-scenes museum tours.

TYPICAL DAY SCHEDULE:

8am	Breakfast
9am	Morning sessions (with breaks)
1pm	Lunch
2pm	Afternoon sessions (with breaks)
5pm	Free time / networking event
7-9pm	Dinner (opportunity to network / hear from speakers)



'Being able to undertake the week in the inspiring surroundings of the University of Oxford just made the experience so special.'

Paul Griffiths

Director, Painshill Park Trust Ltd, UK



OXFORD CULTURAL LEADERS ONLINE PROGRAMME

DURATION: 5 consecutive days

DELIVERY: via Zoom

COURSE DATES: 12–16 June 2023

APPLICATION DETAILS:

www.glam.ox.ac.uk/application-fees

Applications to the programme are considered by a panel of faculty members.

CONTACT DETAILS:

ocl@glam.ox.ac.uk

www.glam.ox.ac.uk/oxford-cultural-leaders



COURSE INTRODUCTION

The online programme offers cultural leaders around the world the flexibility of professional development and networking delivered in the comfort of their own workspaces. It includes expertly facilitated, immersive and highly participatory online sessions with the same OCL faculty who support the residential programme. The sessions are tailored to optimise online learning and designed to inspire innovation and to build a supportive peer network.

- Greater flexibility with live online delivery
- Opportunity to network with faculty and delegates from around the world
- Interactive workshops, group breakouts, reflection sessions, regular breaks
- Keynote speeches, panel discussions
- Structured peer-to-peer support
- Maximum group size: 26
- Bespoke 1:1 leadership coaching

2023 ONLINE PROGRAMME FEES

To make the programme as accessible as possible, fees are based on the participants' organisation size and not-for-profit status.

1–15 employees (not for profit)	£ 950
16–70 employees (not for profit)	£1,580
71–150 employees (not for profit)	£2,260
151+ employees (not for profit)	£2,860
1–15 employees (for profit)	£2,200
16–70 employees (for profit)	£2,860
71–150 employees (for profit)	£3,520
151+ employees (for profit)	£4,180

Prices correct at time of publishing: March 2023

Participants (both Home/EU and International) contribute the fee as listed above; the fee is inclusive of tax and includes the cost of all tuition, two bespoke coaching sessions and one OCL alumni network online session of your choice to be taken during the first year following your programme. Fees are in pounds sterling, other currencies will be converted using a standard exchange rate at the time of payment.

See overleaf for course breakdown.

'It gave me the space to step back and change some behaviours that were not helpful to me. It's not just about listening to inspirational speakers, reading interesting academic articles and practising theory, it's so much more! The whole process changes you for the better.'

Victoria Robinson

Chief Executive Officer, The Met, UK

'Brilliant and energising experience which extended my network of inspiring and like-minded peers across the globe.'

Karin Kihlberg

Executive Director, Peckham Platform, UK

OXFORD CULTURAL LEADERS ONLINE PROGRAMME

PROGRAMME CONTENT

Delivered by cultural sector leaders, business school experts and industry authorities, the online programme runs over five consecutive days covering leadership questions and challenges such as:

- 'Balancing the challenges of leading in the present and the future'
- 'Embracing leadership in uncompromising times'
- 'What do we mean by brave leadership?'
- 'Cultivating my leadership identity'

Read about the programme curriculum:
www.glam.ox.ac.uk/ocl-programme

BESPOKE 1:1 VIRTUAL LEADERSHIP COACHING

The online programme offers participants bespoke 1:1 leadership coaching to optimise the programme experience and application of learning.

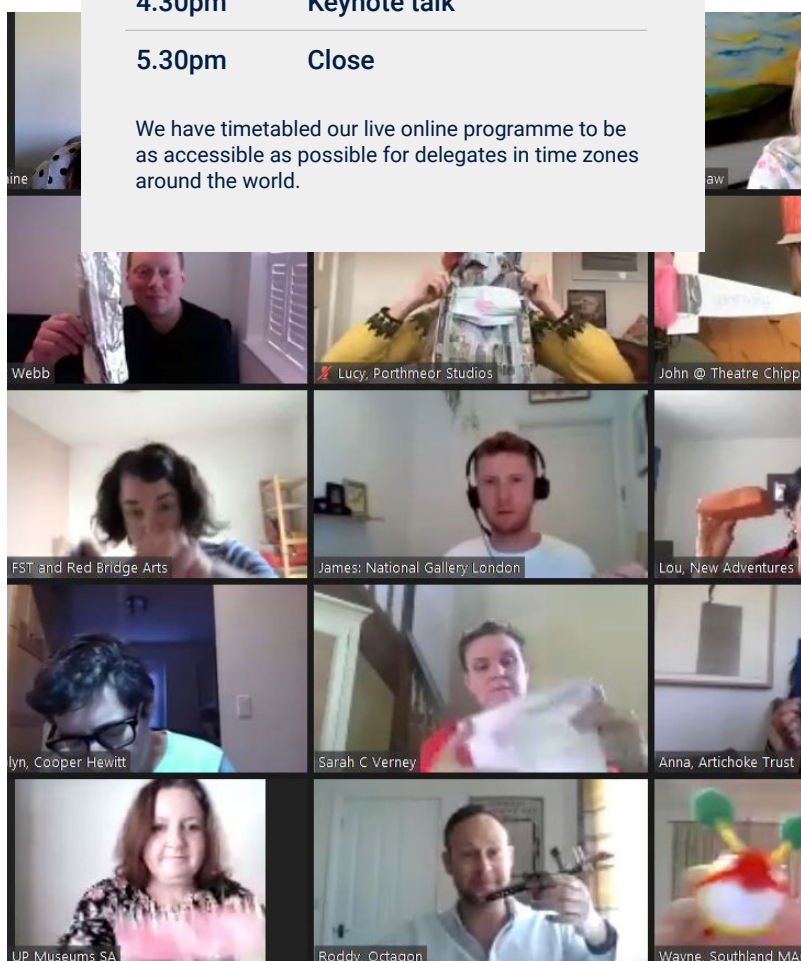


Typical Day Schedule (BST):

Pre-session learning task

12.30pm	Introduction
12.45pm	Sessions (with breaks)
3.45pm	Reflective practice
4.30pm	Keynote talk
5.30pm	Close

We have timetabled our live online programme to be as accessible as possible for delegates in time zones around the world.



'OCL was a once-in-lifetime opportunity and world-class. Offered by passionate, skilled leaders with extraordinary stories and experience. The research and fact-rammed programme was exciting, entertaining, yet daunting. The diverse offerings of leadership for museums to business and psychology provided an inimitable memory of what leadership is and has the potential to be.'

Dr Sian L Tiley-Nel

Head of UP Museums, Office of the Registrar, University of Pretoria Museums, South Africa

OXFORD CULTURAL LEADERS

ALUMNI TESTIMONIALS

'The Oxford Cultural Leaders programme is a truly transformative experience where you are surrounded by the newly found support of an extraordinarily knowledgeable and kind cohort of colleagues from around the world. An invaluable opportunity that becomes an ongoing resource throughout your career.'

Myriam Proulx

Business Transformation Specialist, Canadian Museum of History, Gatineau, Canada

'OCL residential is a unique experience. Having the opportunity to take six days away from work and home life to envelop myself in the inspirational colleges, museums and streets of Oxford with a group of dynamic, knowledgeable and truly inspirational human beings who are all on a journey together... wow.'

Jen Ridding

Deputy Director: Engagement & Operations, The Barber Institute of Fine Arts, UK

'The programme framework integrated leadership skills with mindful strategies and I loved that. It was so relevant to my core values.'

Melissa A. Carrillo

Director Of New Media & Technology, Smithsonian Latino Center, USA

'Nobody teaches you how to be a leader...let alone a good, effective leader! OCL provides an opportunity for hard and fearless introspection... to dig deep and understand one's own leadership style, strengths, and weaknesses.'

Sujit Tolat

SVP, International Practice, Gallagher Design

'Since the course I have had renewed energy and the projects I organise are now much more focused and larger scale.'

Lone Britt Christensen

Cultural Attaché, Embassy of Denmark, UK

Read alumni testimonials: www.glam.ox.ac.uk/ocl-alumni



in partnership with

