

# HAVE FUN WITH THE FAMILY

*A season of surprises awaits you in Oxford University's Gardens, Libraries & Museums. So what are you waiting for? Let's go!*



First things first, every adventurer needs a passport. Pick yours up from 1 July at any of the information desks across our seven sites. Your passport can really take you places, from Egyptian tombs to Catacombs, Viking trails to Crocodiles' tails. Collect a sticker at each adventure until you have enough for a special treat!

# STICK AROUND!

*Things are about to get interesting... Here's a quick guide to all the stickers you can collect on your adventures. Remember, once you've collected any three stickers it's time for a treat!*

**ASHMOLEAN MUSEUM**  
**BOTANIC GARDEN**  
**PITT RIVERS MUSEUM**  
**HARCOURT ARBORETUM**  
**BODLEIAN LIBRARIES**  
**MUSEUM OF NATURAL HISTORY**  
**MUSEUM OF THE HISTORY OF SCIENCE**

Each time you visit one of the Mindgrowing gardens, libraries or museums head to the information desk to collect a sticker in your passport. Once you've collected three stickers – either from different sites or the same site – head to the information desk at any site and collect your prize!

## GOOD STUFF TO GRAB

*Go and grab your explorer packs from any of our information desks on site!*

### ASHMOLEAN MUSEUM

Begin your Ashmolean adventure at the information desk where you can collect family trails and sketching materials every day. On weekends you'll find activity packs, make-and-takes, magnifiers and torches (2–4 PM).

### BOTANIC GARDEN

Why not pick up a botanic backpack to take with you to explore the garden? Backpacks contain a selection of activities and are packed full of ideas to help you get the most from your visit.

### HARCOURT ARBORETUM

Pick up an explorer's backpack from the ticket office and use it to help you explore the 130-acre site.

### MUSEUM OF THE HISTORY OF SCIENCE

Help yourself to family-friendly trails in the entrance gallery. Ages 5+

### MUSEUM OF NATURAL HISTORY

Pick up one of our family-friendly trails at the family trolley to explore the museum together. Family explorer backpacks available Sundays, 2–4pm.

### PITT RIVERS MUSEUM

Borrow a torch to discover the hidden wonders in the nooks and crannies of the museum (£2 deposit).

## WEEK-IN-WEEK-OUT

EVERY SATURDAY, 11.30AM–3.30PM

### HANDS-ON COINS

Hold a piece of history in your hand as you discover coins from Ancient Greece through the 1800s.

ASHMOLEAN MUSEUM

EVERY SATURDAY, 11AM–1PM

### OBJECT HANDLING

Discover more about wonderful and fascinating objects from the museum's collection.

PITT RIVERS MUSEUM

EVERY SUNDAY, 2–4PM

### FAMILY-FRIENDLY SUNDAYS

Trails, crafts, backpacks and more - all provided by museum volunteers.

MUSEUM OF NATURAL HISTORY

EVERY THURSDAY IN TERM TIME, 10.30–11.15AM

### LITTLE ASHMOLES

Explore, play and learn together in this fun gallery activity.

ASHMOLEAN MUSEUM

## JULY



SUNDAY 1ST, 11AM-4PM

### PITT RIVERS POP-UP AT COWLEY ROAD CARNIVAL

Create carnival rhythms and enjoy music-making, object handling and craft.  
 ST MARY AND ST JOHN CHURCH, COWLEY ROAD

THURSDAY 5TH, 12TH & 19TH, 10.30-11.15AM

### LITTLE ASHMOLES: WOOF WOOF!

Explore, play and learn together.  
 ASHMOLEAN MUSEUM

SATURDAY 7TH, 10AM-4.30PM

### ALICE'S DAY: CURIOUS CABINETS AND CURIOSER CRAFT

Make mini books in our workshops at 10am, 11am, 1pm and 2pm (booking required). Drop in for badge making and printing on the hand-press.  
 WESTON LIBRARY

SATURDAY 7TH, 12-3PM

### ALICE'S DAY: HOP INTO WONDERLAND

Make mobiles and meet the animals from the Mad Hatter's tea party.  
 MUSEUM OF NATURAL HISTORY

SATURDAY 7TH, 1-4PM

### ALICE'S PICNIC

Bring a picnic, meet characters, enjoy seed planting and face painting. Free entry for children with a paying adult.  
 BOTANIC GARDEN

SATURDAY 7TH, 2-2.45PM & 3.15-4PM

### ALICE'S DAY: ASHVENTURE SPECIAL

Stories, gallery hunts, games and crafts.  
 ASHMOLEAN MUSEUM

SATURDAY 7TH, 2-4PM

### ALICE'S ADVENTURE

Find out about cameras and early photography, experiment with cyanotypes, and add your piece to Alice's giant album.  
 MUSEUM OF THE HISTORY OF SCIENCE

SATURDAY 14TH, 2-4PM

### MEET THE EXPERTS

Drop in for a chat with science experts and get hands-on with science.  
 MUSEUM OF NATURAL HISTORY

SATURDAY 14TH, 2-4PM

### GLOBE-MAKERS

Explore the museum's globe collection and make your own pocket globe.  
 MUSEUM OF THE HISTORY OF SCIENCE

MONDAY 16TH, 10.30AM & 11.30AM

### A LITTLE LOOK AT... DINOSAURS

Spot dinosaurs around the museum.  
 MUSEUM OF NATURAL HISTORY

SATURDAY 21ST, 2-3.30PM

### HANDS ON TABLA

Listen and play on Indian tabla drums.  
 PITT RIVERS MUSEUM

SATURDAY 21ST & SUNDAY 22ND, 11AM-4PM

### ANGLO-SAXONS AND VIKINGS FESTIVAL

Enjoy a weekend of fun-filled activities.  
 ASHMOLEAN MUSEUM

SATURDAY 28TH, 11AM-3PM

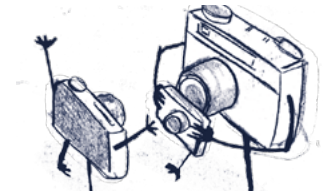
### ETHIOPIAN AND ERITREAN DISCOVERY DAY

Discover art, language and music.  
 WESTON LIBRARY

SATURDAY 28TH, 2PM & 3PM

### OPERATION EARTH FAMILY SHOW

Be amazed by our spectacular family science show all about planet Earth.  
 MUSEUM OF NATURAL HISTORY



SATURDAY 28TH, 1-4PM

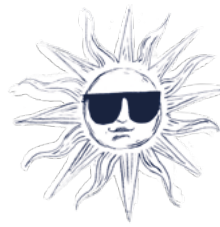
### ELEMENTS PICNIC

Bring a picnic and discover the elements with music, craft and gardening. Free entry for children with a paying adult.  
 BOTANIC GARDEN

TUESDAY 31ST, 2-4PM

### BAGS OF FUN

Pick up an activity-filled backpack.  
 MUSEUM OF NATURAL HISTORY



## AUGUST

EVERY TUESDAY, 1-4PM

### FAMILY-FRIENDLY CRAFT

Enjoy crafts in the woods, meet wildlife and discover wildflower meadows and ancient redwood trees. Free entry for children with a paying adult.  
 HARCOURT ARBORETUM

EVERY WEDNESDAY AND THURSDAY, 2-4PM

### HOLIDAY FUN: ANCIENT EGYPTIAN EXPLORERS

Enjoy crafts, stories and hieroglyphics.  
 ASHMOLEAN MUSEUM

EVERY FRIDAY, 2-4PM

### OPERATION EARTH: HANDS-ON

Get hands-on with our Operation Earth kit and discover more about nature.  
 MUSEUM OF NATURAL HISTORY

THURSDAY 2ND, 9TH, 16TH & 23RD, 2PM & 3PM

### OPERATION EARTH FAMILY SHOW

Be amazed by our spectacular family science show all about planet Earth.  
 MUSEUM OF NATURAL HISTORY

SATURDAY 4TH, 12-3PM

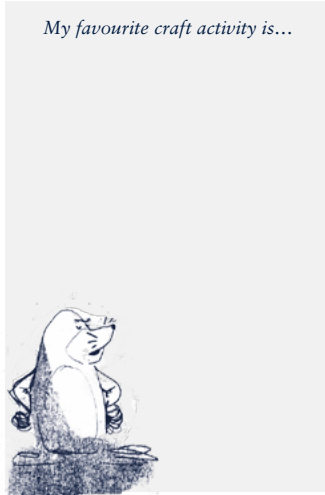
### PRINTING A SUMMER KEEPSAKE

Enjoy printing on the hand-press.  
 WESTON LIBRARY

SATURDAY 4TH & 18TH, 2-4PM

### MEET THE EXPERTS

Drop in for a chat with science experts and get hands-on with science.  
 MUSEUM OF NATURAL HISTORY



MONDAY 6TH, 1-4PM (TALK AT 2.30PM)

### OPERATION EARTH: BRILLIANT BEES

Enjoy the buzz of *Horrible Science* illustrator Tony De Saulles talking about his book, *Bee Boy*. Booking at [www.bit.ly/mnhevents](http://www.bit.ly/mnhevents).  
 MUSEUM OF NATURAL HISTORY

TUESDAY 7TH, 1-3PM

### CREATIVITY BACKPACKS

Grab a fun-filled backpack and discover new things in the museum.  
 PITT RIVERS MUSEUM

TUESDAY 14TH & 28TH, 2-4PM

### BAGS OF FUN

Pick up an activity-filled backpack.  
 MUSEUM OF NATURAL HISTORY

SATURDAY 18TH, 2-4PM

### SEND A MESSAGE SOS

Learn Morse code, experiment with the museum's telegraphic apparatus, and unravel the mystery message.  
 MUSEUM OF THE HISTORY OF SCIENCE

MONDAY 20TH, 1-4PM

### OPERATION EARTH: OCEANS

Explore a world under the sea, with crafts and specimen handling.  
 MUSEUM OF NATURAL HISTORY



TUESDAY 21ST, 1-3PM

### TOUCH, THINK, WONDER: TIBETAN MUSEUM

Learn about Tibetan culture and objects.  
 PITT RIVERS MUSEUM

SATURDAY 25TH, 10.30AM-12.30PM & 1.30PM-3.30PM

### CREATIVE MAKING WORKSHOP

Make your own beautiful objects with traditional craft makers. £16.50 per child with a free adult place.  
 PITT RIVERS MUSEUM

THURSDAY 30TH & FRIDAY 31ST, 2-4PM

### MAKING MICROGRAPHIA

Observe tiny things with microscopes and lenses. Make magical monoprints.  
 MUSEUM OF THE HISTORY OF SCIENCE

## SEPTEMBER



SATURDAY 1ST, 15TH & 22ND, 2-4PM

### MEET THE EXPERTS **A**

Drop in for a chat with science experts and get hands-on with science.

☛ MUSEUM OF NATURAL HISTORY

EVERY THURSDAY, 10.30-11.15AM

### LITTLE ASHMOLES: RAINBOW **3-5**

Explore, play and learn together.

☛ ASHMOLEAN MUSEUM

EVERY FRIDAY, 10.30-11.30AM

### BABY ASHMOLES: 18TH-CENTURY ART **16**

Singing and sensory play for babies. £4 per adult, babies free - booking essential.

☛ ASHMOLEAN MUSEUM

SATURDAY 8TH, 11AM-4PM

### ACTIVITY DAY: TOLKIEN - MAKER OF MIDDLE-EARTH **16**

Drop in for re-enactors, runes and riddles throughout the day. Book tickets at <https://tolkien.bodleian.ox.ac.uk/> to see the Tolkien exhibition.

☛ WESTON LIBRARY

MONDAY 10TH, 10.30AM & 11.30AM

### A LITTLE LOOK AT... UNDERGROUND **5**

From animals to fossils, find out what's beneath our feet.

☛ MUSEUM OF NATURAL HISTORY

SATURDAY 15TH, 2-3.30PM

### HANDS ON TABLA **16**

Come and listen to Indian tablas and have a go yourself.

☛ PITT RIVERS MUSEUM

TUESDAY 18TH, 10.30AM-12.30PM

### CURIOUS CUBS **5**

Pick up an activity bag and explore the museum with some of our furry friends.

☛ MUSEUM OF NATURAL HISTORY

WEDNESDAY 19TH, 10AM-12PM

### HARVEST TIME **5**

Taste produce and make creations. Free entry for children with a paying adult.

☛ BOTANIC GARDEN

SATURDAY 22ND, 2PM & 3PM

### SPELLBOUND STORIES **7+**

Be spellbound by Olivia Armstrong's stories of a 17th-century witch.

☛ ASHMOLEAN MUSEUM

SATURDAY 22ND, 2-4PM

### CABINET OF CURIOSITIES **5+**

Discover unusual objects and assemble your own cabinet of curiosities.

☛ MUSEUM OF THE HISTORY OF SCIENCE



SATURDAY 29TH, 1-4PM

### INTREPID WOMEN **16**

Follow in the footsteps of intrepid women and plan your own trip.

☛ PITT RIVERS MUSEUM

SATURDAY 29TH, 2-2.45PM & 3.15-4PM

### ASHVENTURE STILL LIFE: FLOWERS, BUGS AND SKULLS **4+**

Stories, gallery hunts, games and crafts.

☛ ASHMOLEAN MUSEUM

SATURDAY 29TH, 2PM & 3PM

### OPERATION EARTH FAMILY SHOW **6+**

Be amazed by our spectacular family science show all about planet Earth.

☛ MUSEUM OF NATURAL HISTORY

## OCTOBER



THURSDAY 4TH, 11TH & 18TH, 10.30-11.15AM

### LITTLE ASHMOLES: MINI BEAST FEAST **3-5**

Explore, play and learn together.

☛ ASHMOLEAN MUSEUM

SATURDAY 6TH, 12-3PM

### PRINTING A FRANKENSTEIN KEEPSAKE **A**

Enjoy printing on the hand-press.

☛ WESTON LIBRARY

SATURDAY 6TH & 20TH, 2PM & 3PM

### SPELLBOUND STORIES **7+**

Be spellbound by Olivia Armstrong's stories of a 17th-century witch.

☛ ASHMOLEAN MUSEUM

SATURDAY 6TH & 20TH, 2-4PM

### MEET THE EXPERTS **A**

Drop in for a chat with science experts and get hands-on with science.

☛ MUSEUM OF NATURAL HISTORY

SUNDAY 7TH, 12-1PM

### FUNGI FORAY **A**

Search for fascinating fungi. Free tour with your entrance ticket.

☛ HARCOURT ARBORETUM

MONDAY 8TH, 10.30AM & 11.30AM

### A LITTLE LOOK AT... BABY ANIMALS **5**

Explore animals and their babies.

☛ MUSEUM OF NATURAL HISTORY

SATURDAY 13TH, 11AM-4PM

### AUTUMN FAIR **A**

Enjoy live music, yummy food, craft stalls and games in the woods. Free entry for children with a paying adult.

☛ HARCOURT ARBORETUM

SATURDAY 13TH, 12-4PM

### MAGICAL MATHS **16**

Join us for a day of mathematical games and activities from ancient to modern, geometry to code-breaking.

☛ MUSEUM OF THE HISTORY OF SCIENCE

SATURDAY 13TH, 20TH AND 27TH, 2-4PM

### SCIENCE SATURDAYS **16**

Meet scientists to investigate real natural history specimens from the collection.

☛ MUSEUM OF NATURAL HISTORY

TUESDAY 16TH, 10.30AM-12.30PM

### CURIOUS CUBS **5**

Pick up an activity bag and explore the museum with some of our furry friends.

☛ MUSEUM OF NATURAL HISTORY

SATURDAY 20TH, 1-4PM

### STORYTELLING WITH AMANTHA EDMOND **6+**

Join Amantha Edmond for stories.

☛ PITT RIVERS MUSEUM

MONDAY 22ND - WEDNESDAY 24TH, 1-4PM

### SEE, THINK, WONDER: BLACK HISTORY MONTH TAKEOVER **6+**

Celebrate Black History Month with activities chosen by the community.

☛ PITT RIVERS MUSEUM

MONDAY 22ND - WEDNESDAY 24TH, 1-4PM

### OPERATION EARTH: FROM POLE TO POLE **A**

Explore creatures from the planet's top and bottom with crafts and specimens.

☛ MUSEUM OF NATURAL HISTORY

MONDAY 22ND, THURSDAY 25TH & SATURDAY 27TH, 2PM & 3PM

### OPERATION EARTH FAMILY SHOW **6+**

Be amazed by our spectacular family science show all about planet Earth.

☛ MUSEUM OF NATURAL HISTORY

TUESDAY 23RD, 1-4PM

### AMAZING AUTUMN **A**

Make and take home your own creations, inspired by our autumn display. Free entry for children with a paying adult.

☛ HARCOURT ARBORETUM

WEDNESDAY 24TH, 11AM-1PM

### ART IN THE AUTUMN **A**

Make autumn-inspired objects. Free entry for children with a paying adult.

☛ BOTANIC GARDEN

WEDNESDAY 24TH & THURSDAY 25TH, 1-4PM

### HALF-TERM FUN: HALLOWEEN **4+**

Crafts, gallery hunts and stories.

☛ ASHMOLEAN MUSEUM

THURSDAY 25TH & FRIDAY 26TH, 1-4PM

### ROBOT DRAW **7+**

Build eccentric Lego drawing machines.

☛ MUSEUM OF THE HISTORY OF SCIENCE

THURSDAY 25TH & FRIDAY 26TH, 1-4PM

### TOUCH, THINK, WONDER: BLACK HISTORY MONTH TAKEOVER **7+**

Handle objects selected by the community and find out more about Black History.

☛ PITT RIVERS MUSEUM





# NOVEMBER



# DECEMBER



EVERY THURSDAY, 10.30-11.15AM

## LITTLE ASHMOLES: DIWALI

Explore, play and learn together.

ASHMOLEAN MUSEUM

SATURDAY 3RD, 10.30AM-12.30PM & 1.30-3.30PM

## TOUCH, THINK, MAKE: FAMILY TEXTILES WORKSHOP

Work with textile designer-makers to create your own beautiful clothwork. £16.50 per child, with free adult place.

PITT RIVERS MUSEUM

SATURDAY 3RD, 10TH AND 17TH, 2-4PM

## SCIENCE SATURDAYS

Meet scientists to investigate real natural history specimens from the collection.

MUSEUM OF NATURAL HISTORY

SATURDAY 17TH, 10AM-4PM

## A NICE CUP OF TEA: TEA TABLE

What connects the Pitt Rivers to a cup of tea? Drop in for a chat at our tea table to find out.

PITT RIVERS MUSEUM

SATURDAY 17TH, 1-4PM

## EYEBALLS AND OTHER THINGS

Dissect eyeballs and carry out curious visual experiments to help you understand sight.

MUSEUM OF THE HISTORY OF SCIENCE

SATURDAY 17TH & SUNDAY 18TH, 12-4PM

## ONE WORLD FESTIVAL

Celebrate Oxford's diverse communities, with crafts, performances, theatre and music.

ASHMOLEAN MUSEUM

TUESDAY 20TH, 10.30AM-12.30PM

## CURIOUS CUBS

Pick up an activity bag and explore the museum with some of our furry friends.

MUSEUM OF NATURAL HISTORY

SATURDAY 24TH, 12-4PM

## SUPER SCIENCE SATURDAY: MICRO WORLD

Meet scientists at this big science bonanza and discover a whole new world under the microscope.

MUSEUM OF NATURAL HISTORY

SATURDAY 24TH, 1-4PM

## TAKEOVER DAY

Join the Ashmolean's Young People's group - Creatives - for a range of activities inspired by their favourite objects. What are your favourites?

ASHMOLEAN MUSEUM

SATURDAY 1ST, 12-3PM

## PRINTING A WINTER KEEPSAKE

Enjoy printing on the hand-press.

WESTON LIBRARY

SATURDAY 1ST, 2-4PM

## SCIENCE SATURDAYS

Meet scientists to investigate real natural history specimens from the collection.

MUSEUM OF NATURAL HISTORY

SATURDAY 1ST, 10AM-6PM, & SUNDAY 2ND, 10AM-4PM

## CHRISTMAS FAIR

Discover a wonderland of handpicked gifts, artisan food and family entertainment. Free entry for children with a paying family member.

BOTANIC GARDEN

SUNDAY 2ND, 2-2.45PM & 3.15-4PM

## ASHVENTURE HANUKKAH: JEWISH FESTIVAL OF LIGHTS

Stories, gallery hunts, games and crafts.

ASHMOLEAN MUSEUM

SATURDAY 8TH, 11AM-1PM

## CHRISTMAS FAMILY CRAFT

Spend a festive morning making Christmas decorations from natural materials.

BOTANIC GARDEN

SUNDAY 9TH, 2-2.45PM & 3.15-4PM

## ASHVENTURE HANUKKAH: JEWISH FESTIVAL OF LIGHTS

Stories, gallery hunts, games and crafts.

ASHMOLEAN MUSEUM

MONDAY 10TH, 10.30AM & 11.30AM

## A LITTLE LOOK AT... FOREST FRIENDS

Help us find some of our forest friends who are hiding around the museum.

MUSEUM OF NATURAL HISTORY

SATURDAY 15TH, 2-4PM

## STARS AND PLANETS

Follow your stars, make an amazing star dial or paper plate planetarium.

MUSEUM OF THE HISTORY OF SCIENCE

### KEY

- A** All ages
- 1-** Babies under 1
- 3-5** 3 to 5 years
- 5** Under 5 years
- 4+** Over 4 years
- 5+** Over 5 years
- 5-9** 5 to 9 years
- 6+** Over 6 years
- 7+** Over 7 years
- 8+** Over 8 years
- 9+** Over 9 years
- 10+** Over 10 years
- Craft
- Drawing
- Festival
- Games
- Gardening
- Music making
- Object handling
- Performance
- Picnic
- Play
- Science
- Story-telling
- Tour
- Trail

My favourite animal is...



SATURDAY 3RD, 2-2.45PM & 3.15-4PM

## ASHVENTURE: PORTRAIT DETECTIVES

Stories, gallery hunts, games and crafts.

ASHMOLEAN MUSEUM

MONDAY 5TH, 10.30AM & 11.30AM

## A LITTLE LOOK AT... NURSERY RHYME ANIMALS

Sing along to some of your favourite nursery rhymes and meet the animals that feature in the songs.

MUSEUM OF NATURAL HISTORY

FRIDAY 16TH, 6-9PM

## CHRISTMAS LIGHT FESTIVAL: CARD PRINTING

Print or collage a greetings card, drawing inspiration from the Bodleian collections.

WESTON LIBRARY



THURSDAY 6TH, 13TH AND 20TH, 10.30-11.15AM

## LITTLE ASHMOLES: ANGELS

Explore, play and learn together.

ASHMOLEAN MUSEUM

TUESDAY 18TH, 10.30AM-12.30PM

## CURIOUS CUBS

Pick up an activity bag and explore the museum with some of our furry friends.

MUSEUM OF NATURAL HISTORY

SATURDAY 22ND DECEMBER TO SUNDAY 6TH JANUARY

## CHRISTMAS TRAIL

Pick up a seasonal trail at the welcome desk during opening hours.

ASHMOLEAN MUSEUM

SATURDAY 22ND DECEMBER TO SUNDAY 6TH JANUARY, DURING OPENING HOURS

## CHRISTMAS CRACKERS TRAIL

Get into the festive mood with the Christmas Crackers trail. Can you find all the crackers around the museum?

MUSEUM OF NATURAL HISTORY